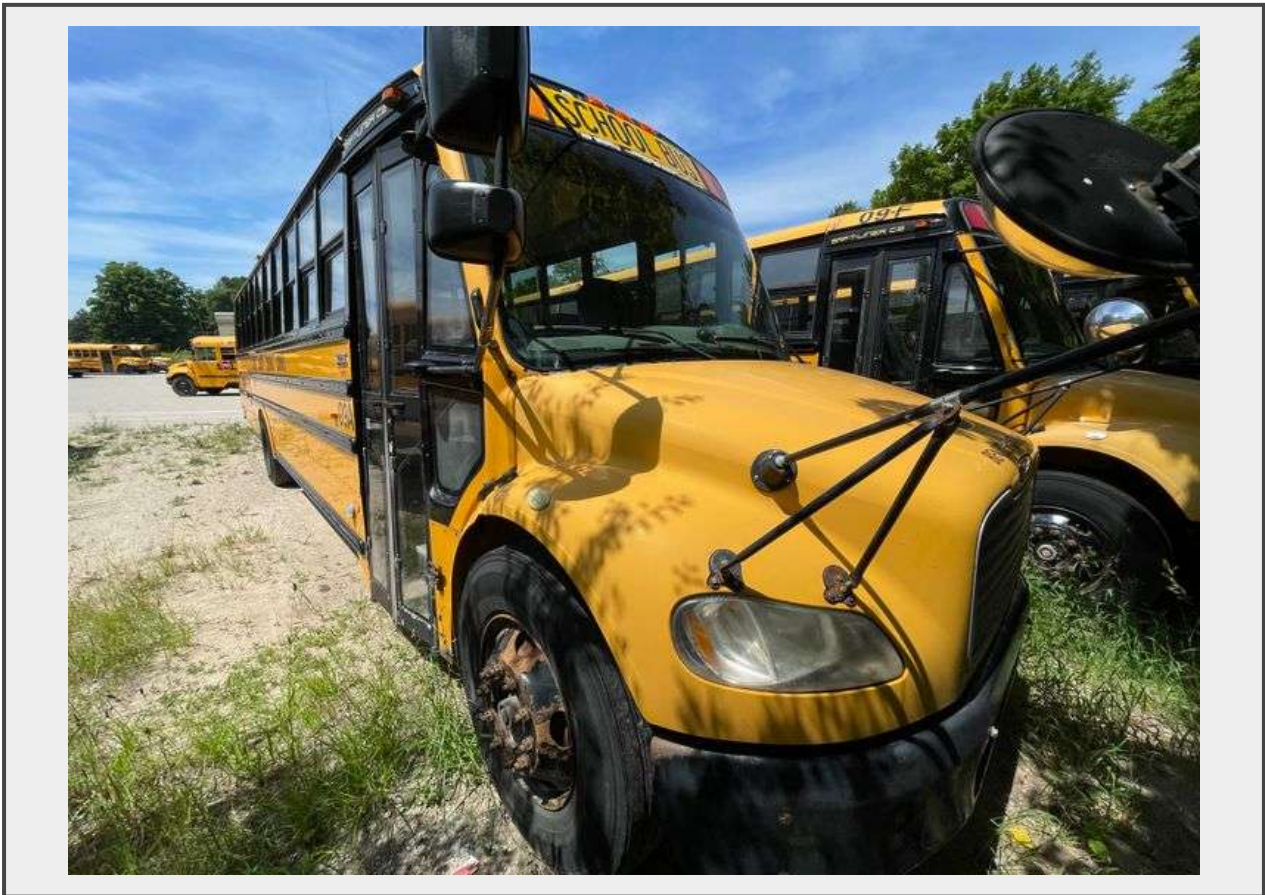


Sale Name: Benzie County Central Schools, MI

LOT L09-A - 2009 FREIGHTLINER C2 W/MERCEDES MBE-900



Year 2009

Make FREIGHTLINER

Model C2

Engine MERCEDES MBE-900

Fuel DIESEL

Brakes AIR

Pass Cap. 72

Mileage 184,435

Description

VEH #: 09-A

YEAR: 2009

MAKE: FREIGHTLINER

MODEL: C2

ENGINE: MERCEDES MBE-900

FUEL TYPE: DIESEL

TRANSMISSION (AUTO/MANUAL): AUTO

BRAKES (AIR OR HYD): AIR

MILES: 184435

PAX CAPACITY: 72

VIN#: 4UZABRDJ99CAD3252

NOTES: ENGINE RUNS, CAN NOT BE DRIVEN AWAY-MUST BE TOWED, HAS NOT BEEN IN USE-UNKNOWN MECHANICAL CONDITION

<https://youtu.be/0YkX0GOhOtY>

****Due to the fact that we are NOT certified mechanics, and the information provided above is given to us from the seller, IT IS YOUR RESPONSIBILITY TO INSPECT AND VALIDATE THIS AUCTION ITEM BEFORE BIDDING. All items are sold as is, where is, with no warranty implied. Once placed, all bids are final. If you win the item without inspecting it first, you will NOT be entitled to any refund of any kind. Please bid accordingly.*****

Quantity: 1

CIS AUCTIONS

<https://bids.cisauctions.com/>